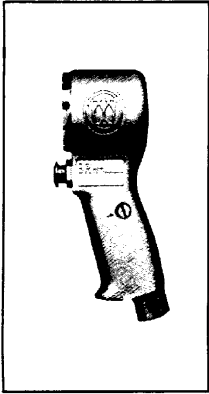


BRH-7 SERIES AIR IMPACT CUTTERS

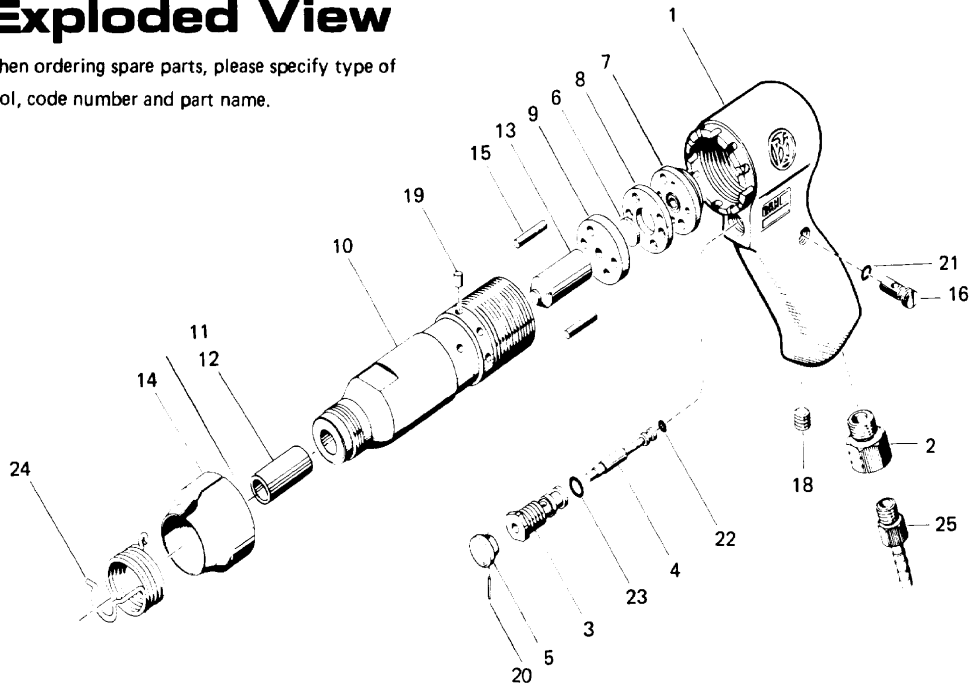
Exploded View

When ordering spare parts, please specify type of tool, code number and part name.



Handle Assembly
code 714-002-2
components

(#1, 2, 3, 4, 5, 16,
18, 20, 21, 22, 23)



Parts List

Handle assembly components are marked with an "O".

Index No.	Code No.	Part Name	Quantity	Index No.	Code No.	Part Name	Quantity
# 1	714-011-2	○ Handle	1	# 15	714-761-1	Cylinder Notch Pin	2
# 2	185-091-7	○ Air Inlet Bushing	1	# 16	023-240-1	○ Regulator Valve	1
# 3	603-101-1	○ Valve Bushing	1	# 18	966-100-0	○ Allen Head Plug 1/8"	1
# 4	603-100-2	○ Valve	1	# 19	970-406-0	Pin (H) (5x6.3)	1
# 5	603-107-2	○ Throttle Trigger	1	# 20	973-010-0	○ Roll Pin (2x10)	1
# 6	714-195-1	Main Valve	1	# 21	990-003-0	○ "O" Ring (P5)	1
# 7	714-198-1	Rear Valve Seat	1	# 22	990-203-0	○ "O" Ring (JW1516-3)	1
# 8	714-199-1	Valve Spacer	1	# 23	990-610-0	○ "O" Ring (8x2)	1
# 9	714-200-1	Front Valve Seat	1	● Parts marked with "*" are at the User's choice.			
# 10	714-286-2	Cylinder	1	Accessories			
# 11	705-567-1	* Bushing (R)	1	= 24	714-813-1	Spring Chisel Retainer	1
# 12	786-567-1	* Bushing (H)	1	= 25	940-116-0	Air Hose Nipple (NPT 1/4 x 3/8)	1
# 13	714-546-1	Piston	1				
# 14	714-782-1	Exhaust Deflector	1				

Standard Chisels are marked with "*" . Hex. Shank Chisels marked with "⊙" : Min. quantity for ordering is 50 pcs. each.

CHISEL	Code No.		CHISEL	Code No.	
	Round Shank	Hex. Shank		Round Shank	Hex. Shank
Blank	921-095-0	⊙ 921-120-0	Fork	921-097-0	⊙ 921-122-0
Flat	* (7") 921-087-0 (9") 921-086-0	* 921-127-0 921-126-0	Hammer	921-098-0	⊙ 921-123-0
Sheet Metal (A)	* 921-096-0	* 921-115-0	Scraper	* 921-088-0	* 921-128-0
Sheet Metal (B)	921-092-0	⊙ 921-117-0	Tail Pipe Cutter	921-093-0	⊙ 921-118-0
Spot Weld Breaker	* 921-085-0	* 921-125-0	Double Blade Panel Cutter	921-089-0	⊙ 921-129-0
Taper Punch	921-091-0	⊙ 921-121-0	Panel Crimper	921-099-0	⊙ 921-116-0
Bushing Remover	921-094-0	⊙ 921-119-0			

Distributed by:

URYU SEISAKU, LTD.

Claims must be filed only with distributors within ten (10) days from delivery.