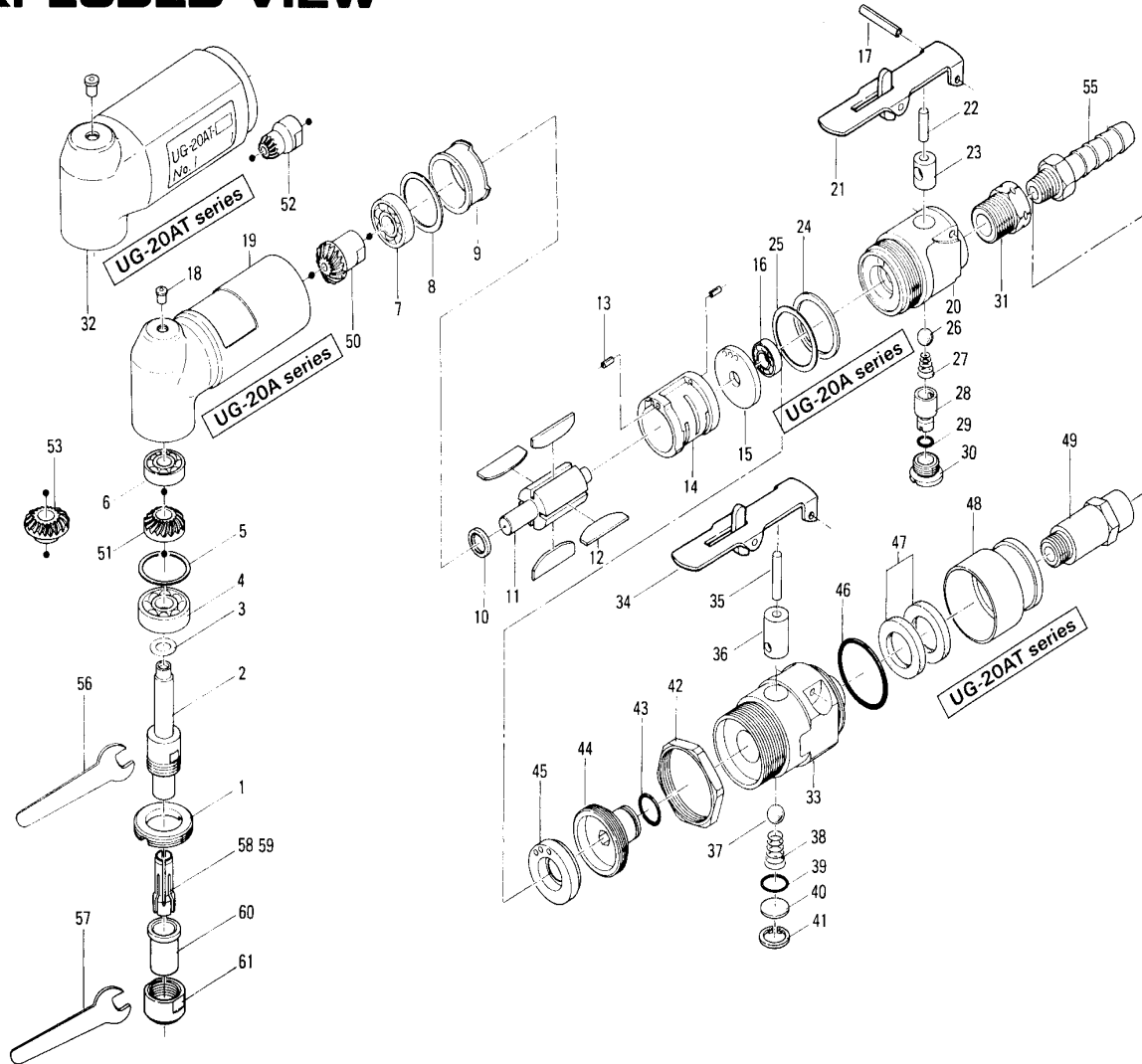


UG-20A series Angle Die Grinders

EXPLODED VIEW



PARTS LIST

Index No.	Code No.	Parts Name	Quantity	Index No.	Code No.	Parts Name	Quantity	Index No.	Code No.	Parts Name	Quantity
Common Parts				# 21	500-914-7	Valve Lever Assy	1	# 44	516-012-8	Casing Cover	1
# 1	517-065-4	Casing Front Plate	1	# 22	970-317-0	Pin (H) (4x17)	1	# 45	516-291-8	Rear Plate Spacer	1
# 2	517-390-4	Wheel Spindle	1	# 23	517-101-3	Valve Bushing	1	# 46	990-922-0	O-Ring (SNS-28)	1
# 3	975-108-0	Spacer (91x8.1x2H)	1	# 24	975-795-0	Adjusting Spacer (29x26xT)	1	# 47	472-835-7	Filter	2
# 4	982-053-0	Ball Bearing (628Z)	1	# 25	975-228-0	Spacer (29x26x1.1)	1	# 48	197-782-6	Exhaust Deflector	1
# 5	975-806-0	Adjusting Spacer (24x20xT)	1	# 26	981-207-0	Ball (9/32)	1	# 49	197-091-7	Air Inlet Bushing	1
# 6	982-014-0	Ball Bearing (607)	1	# 27	977-060-0	Cone Spring (5x8x12)	1	Parts for UG-20A(T)-200			
# 7	982-045-0	Ball Bearing (608Z)	1	# 28	517-240-3	Regulator Valve	1	# 50	517-420-3	Driving Gear	1
# 8	975-799-0	Adjusting Spacer (27x22xT)	1	# 29	990-903-0	O-Ring (SNS-5)	1	# 51	517-430-3	Driven Gear	1
# 9	517-289-3	Front Plate	1	# 30	517-019-3	Valve Cover	1	Parts for UG-20A(T)-120			
# 10	517-305-3	Front Plate Spacer	1	# 31	546-091-1	Air Inlet Bushing	1	# 52	517-420-5	Driving Gear	1
# 11	517-387-3	Rotor	1	Parts for UG-20AT Series				# 53	517-430-5	Driven Gear	1
# 12	517-288-3	Blade	4	# 32	516-025-8	Casing	1	Accessories			
# 13	973-005-0	Roll Pin (2x5)	2	# 33	516-014-9	Valve Body	1	# 55	940-114-0	Hose Nipple (NPT1/4x3/8)	1
# 14	517-286-3	Cylinder	1	# 34	196-107-7	Valve Lever Assy	1	# 56	936-514-0	Spanner (14)	1
# 15	517-285-3	Rear Plate	1	# 35	970-320-0	Pin (H) (4x20)	1	# 57	936-517-0	Spanner (17)	1
# 16	982-033-0	Ball Bearing (696)	1	# 36	500-102-2	Valve Bushing	1	# 58	923-201-0	Ericson Chuck (1/4)	1
# 17	973-124-0	Roll Pin (3x24)	1	# 37	981-208-0	Ball (5/16)	1	# 59	923-207-0	Ericson Chuck (6mm)	1
# 18	968-130-0	Grease Cup (3/16)	1	# 38	977-123-0	Cone Spring (6.5x7.5x13)	1	# 60	923-203-0	Ericson Chuck Holder	1
Parts for UG-20A Series				# 39	973-124-0	Roll Pin (3x24)	1	# 61	923-204-0	Ericson Chuck Nut	1
# 19	517-025-3	Casing	1	# 40	539-019-0	Valve Cover	1				
# 20	517-014-3	Valve Body	1	# 41	979-006-0	Inner Snap Ring (13)	1				
				# 42	561-736-8	Valve Body Nut	1				
				# 43	990-909-0	O-Ring (SNS-11.2)	2				

When ordering spare parts, please specify tool type, code number and part name.

Printed in Japan

URYU SEISAKU, LTD.

Osaka, Japan