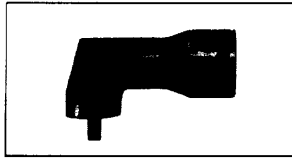


UD-60S-15C & 29C AIR DRILLS



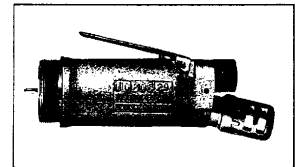
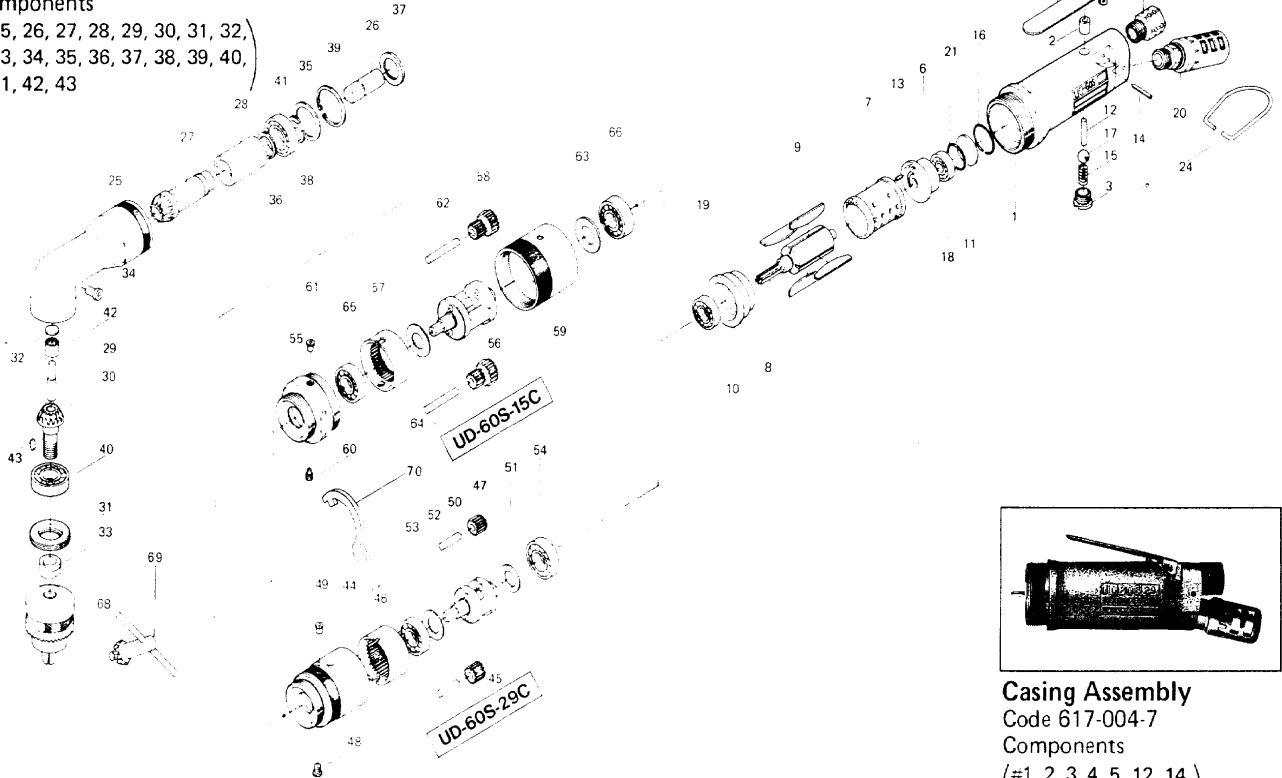
EXPLODED VIEW

Angle Head Casing Assembly

Code 618-883-7

Components

(#25, 26, 27, 28, 29, 30, 31, 32,
33, 34, 35, 36, 37, 38, 39, 40,
41, 42, 43)



Casing Assembly

Code 617-004-7

Components

(#1, 2, 3, 4, 5, 12, 14,
15, 17)

PARTS LIST

Casing Assembly components are marked with "C".

Angle Head Casing Assembly components are marked with "x".

Index No.	Code No.	Part Name	Quantity	Index No.	Code No.	Part Name	Quantity	Index No.	Code No.	Part Name	Quantity
UD-60S-15C - 29C COMMON PARTS				=31	618-072-7	x Bevel Gear Casing Cover	1	477-005-0 UD-60S-15C Gear Box Assembly			
= 1	617-025-7	Casing	1	=32	612-414-1	x Front Cover	1	=55	477-029-0	Gear Casing	1
= 2	553-103-1	x Valve Rod Bushing	1	=33	603-411-1	x Chuck Retainer	1	=56	477-480-0	Gear Cage	1
= 3	201-108-1	x Valve Plug	1	=34	968-130-0	x Grease Cup (3/16)	1	=57	612-465-7	Internal Gear	1
= 4	500-107-1	x Valve Lever	1	=35	975-216-0	x Spacer (28x20x1)	1	=58	612-470-3	Planet Gear	2
= 5	191-091-5	x Air Inlet Bushing	1	=36	975-797-0	x Adjusting Spacer (28x22xT)	1	=59	612-035-3	Casing Connector	1
= 6	600-285-2	Rear Plate	1	=37	975-845-0	x Adjusting Spacer (37.5x33.2xT)	1	=60	952-205-0	Allen Head Dog Point Screw (M5x5)	1
= 7	600-286-1	Cylinder	1	=38	979-515-0	x Outer Snap Ring (WR15)	1	=61	968-130-0	Grease Cup (3/16)	1
= 8	612-287-0	Rotor	1	=39	979-021-0	x Inner Snap Ring (28)	1	=62	972-174-0	Roller Pin (5x32)	2
= 9	600-288-1	Blade	4	=40	982-141-0	x Ball Bearing (6001Z)	1	=63	975-138-0	Spacer (22x13.7x2)	1
=10	612-289-0	Front Plate	1	=41	982-903-0	x Ball Bearing (6902)	1	=64	975-162-0	Spacer (24x12.5x0.4)	1
=11	600-291-1	Rear Plate Spacer	1	=42	988-004-0	x Needle Roller Bearing (NK5/12)	1	=65	982-140-0	Ball Bearing (6000Z)	1
=12	970-321-0	x Pin (H) (4x21)	1	=43	974-005-0	x Key (3x6)	1	=66	982-403-0	Ball Bearing (EE-4)	1
=13	973-006-0	Roll Pin (2x6)	1	478-005-0 UD-60S-29C Gear Box Assembly				Accessories			
=14	973-124-0	x Roll Pin (3x24)	1	=44	478-029-0	Gear Casing	1	#67	940-114-0	Air Hose Nipple (NPT 1/4x3/8)	1
=15	977-154-0	x Cone Spring (7x7.5x17)	1	=45	478-480-0	Gear Cage	1	#68	923-070-0	Chuck (8mm)	1
=16	978-231-0	Snap Ring (23x1.2)	1	=46	612-465-8	Internal Gear	1	#69	927-050-0	Chuck Handle (5mm)	1
=17	981-030-0	Ball (3/8)	1	=47	612-470-5	Planet Gear	2	#70	937-065-0	Spanner (4.8x22x153)	1
=18	982-401-0	Ball Bearing (EE-2)	1	=48	312-757-1	Internal Gear Set Screw	1				
=19	982-402-0	Ball Bearing (EE-3)	1	=49	968-130-0	Grease Cup (3/16)	1				
=20	235-885-0	x Silencer Assembly	1	=50	972-164-0	Roller Pin (5x20)	2				
=21	990-914-0	x O-Ring (SNS16)	1	=51	975-138-0	Spacer (22x13.7x2)	1				
=24	010-790-1	Suspension Bail	1	=52	975-162-0	Spacer (24x12.5x0.4)	1				
=25	618-032-7	x Bevel Gear Casing	1	=53	982-140-0	Ball Bearing (6000Z)	1				
=26	618-500-7	x Middle Shaft	1	=54	982-403-0	Ball Bearing (EE-4)	1				
=27	618-420-7	x Driving Gear	1								
=28	618-421-7	x Driving Gear Bushing	1								
=29	618-438-7	x Driven Gear Shaft	1								
=30	618-430-7	x Driven Gear	1								

When ordering spare parts, please specify tool type, code number and part name.