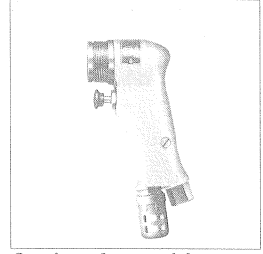
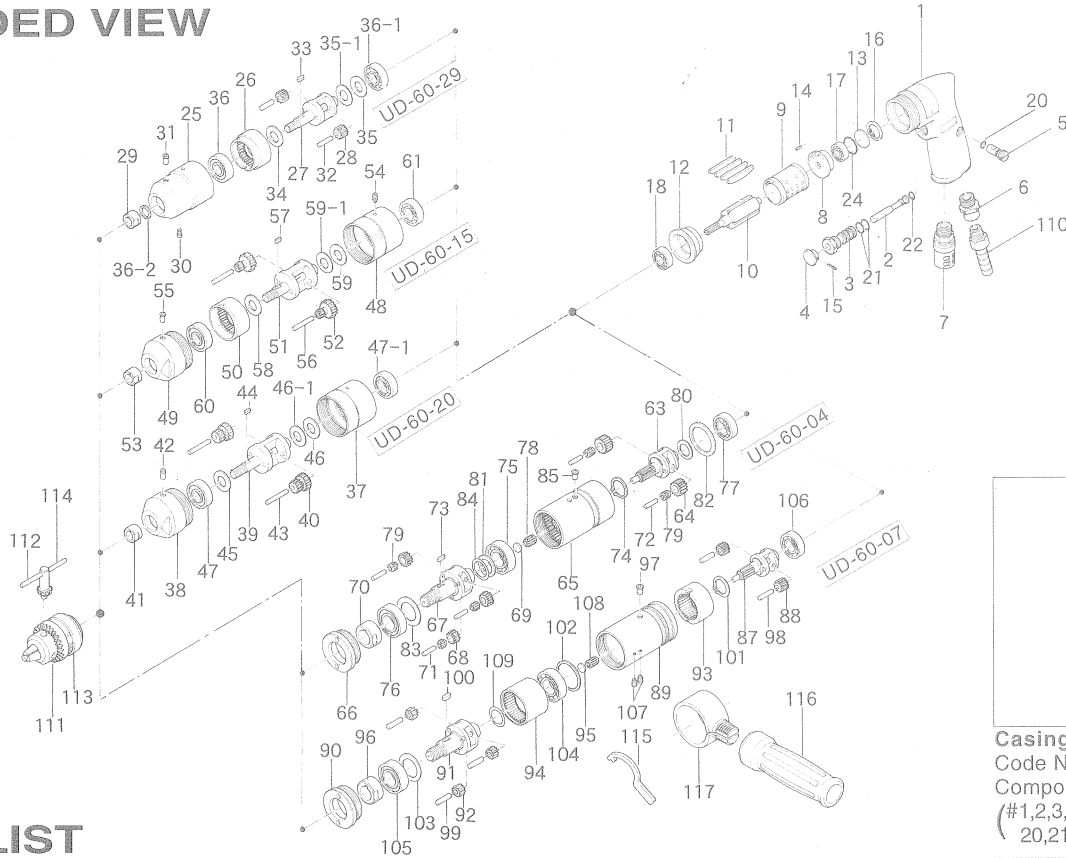


# UD-60 SERIES (29,20,15,07,04) AIR DRILLS

## EXPLODED VIEW



**Casing Assembly**  
Code No. 612-004-0  
Components  
(#1,2,3,4,5,6,7,15, 20,21,22 )

## PARTS LIST

Index No.	Code No.	Parts Name	Quantity	Index No.	Code No.	Parts Name	Quantity	Index No.	Code No.	Parts Name	Quantity
<b>COMMON PARTS FOR UD-60 SERIES</b>											
# 1	612-025-0	Casing	1	# 39	612-319-4	Anvil	1	# 78	988-004-0	Needle Roller Bearing (NK5/12)	1
# 2	603-100-2	Valve	1	# 40	612-470-4	Planet Gear	2	# 79	988-450-0	Needle Roller Beading(HK-0408)	5
# 3	606-101-1	Valve Bushing	1	# 41	603-411-1	Chuck Retainer	1	# 80	975-136-0	Spacer (22×13.7×0.6)	1
# 4	603-107-2	Throttle Trigger	1	# 42	968-130-0	Grease Cup (3/16)	1	# 81	975-172-0	Spacer (24×18×1)	1
# 5	023-240-1	Regulator Valve	1	# 43	972-174-0	Needle Roller (5×32)	2	# 82	975-294-0	Spacer (38×29×2)	1
# 6	191-091-5	Air Inlet Bushing	1	# 44	974-005-0	Key (3×6)	1	# 83	975-250-0	Spacer (32.5×21.2×1)	1
# 7	027-885-6	Silencer Assy	1	# 45	975-162-0	Spacer (24×12.5×0.4)	1	# 84	975-789-0	Adjusting Spacer (22×17×1)	1
# 8	600-285-2	Rear Plate	1	# 46	975-138-0	Spacer (22×13.7×2)	1	# 85	968-130-0	Grease Cup (3/16)	1
# 9	600-286-1	Cylinder	1	# 46-1	975-757-0	Adjusting Spacer (18×13×1)	1	<b>#612-005-6 GEAR BOX ASSEMBLY FOR UD-60-07</b>			
# 10	612-287-0	Rotor	1	# 47	982-140-0	Ball Bearing (6000Z)	1	# 87	612-480-6	Gear Cage	1
# 11	600-288-2	Blade	4	# 47-1	982-403-0	Ball Bearing (EE-4)	1	# 88	612-470-1	First Planet Gear	2
# 12	612-289-0	Front Plate	1	<b>#612-005-7 GEAR BOX ASSEMBLY FOR UD-60-15</b>				# 89	612-029-6	Gear Casing	1
# 13	600-291-1	Rear Plate Spacer	1	# 48	612-035-3	Casing Connector	1	# 90	612-070-1	Gear Casing Cover	1
# 14	973-006-0	Roll Pin (2×6)	1	# 49	612-029-7	Gear Casing	1	# 91	612-319-6	Anvil	1
# 15	973-010-0	Roll Pin (2×10)	1	# 50	612-465-7	Internal Gear	1	# 92	612-471-1	Second Planet Gear	3
# 16	978-231-0	Snap Ring (23×1.2)	1	# 51	612-319-7	Anvil	1	# 93	612-465-6	First Internal Gear	1
# 17	982-401-0	Ball Bearing (EE-2)	1	# 52	612-470-3	Planet Gear	2	# 94	612-466-6	Second Internal Gear	1
# 18	982-402-0	Ball Bearing (EE-3)	1	# 53	603-411-1	Chuck Retainer	1	# 95	612-414-1	Front Cover	1
# 20	990-003-0	O-Ring (P5)	1	# 54	952-205-0	Allen Head Dog Point Screw(M5×5)	1	# 96	609-411-1	Chuck Retainer	1
# 21	990-610-0	O-Ring (8×2)	2	# 55	968-130-0	Grease Cup (3/16)	1	# 97	968-130-0	Grease Cup (3/16)	1
# 22	990-203-0	O-Ring (JW1516-3)	1	# 56	972-174-0	Needle Roller (5×32)	2	# 98	972-119-0	Needle Roller (4×18)	2
# 24	990-914-0	O-Ring (SNS-16)	1	# 57	974-005-0	Key (3×6)	1	# 99	972-163-0	Needle Roller (5×18)	3
<b>#612-005-8 GEAR BOX ASSEMBLY FOR UD-60-29</b>				# 58	975-162-0	Spacer (24×12.5×0.4)	1	# 100	974-010-0	Key (3×10)	1
# 25	612-029-8	Gear Casing	1	# 59	975-138-0	Spacer (22×13.7×2)	1	# 101	978-202-0	Snap Ring (20×1)	1
# 26	612-465-8	Internal Gear	1	# 59-1	975-757-0	Adjusting Spacer (18×13×1)	1	# 102	975-269-0	Spacer (35×30×1)	1
# 27	612-319-8	Anvil	1	# 60	982-140-0	Ball Bearing (6000Z)	1	# 103	975-250-0	Spacer (32.5×21.2×1)	1
# 28	612-470-5	Planet Gear	2	# 61	982-403-0	Ball Bearing (EE-4)	1	# 104	982-103-0	Ball Bearing (6003)	1
# 29	603-411-1	Chuck Retainer	1	<b>#612-005-0 GEAR BOX ASSEMBLY FOR UD-60-04</b>				# 105	982-143-0	Ball Bearing (6003Z)	1
# 30	312-757-1	Internal Gear Set Screw	1	# 63	612-480-0	Gear Cage	1	# 106	982-403-0	Ball Bearing (EE-4)	1
# 31	968-130-0	Grease Cup (3/16)	1	# 64	612-470-0	First Planet Gear	2	# 107	952-204-0	Allen Head Dog Point Screw (M4×23)	2
# 32	972-164-0	Needle Roller (5×20)	2	# 65	612-029-9	Gear Casing	1	# 108	988-004-0	Needle Roller Bearing (NK5/12)	1
# 33	974-005-0	Key (3×6)	1	# 66	612-070-1	Gear Casing Cover	1	# 109	975-789-0	Adjusting Spacer (22×17×1)	1
# 34	975-162-0	Spacer (24×12.5×0.4)	1	# 67	612-319-0	Anvil	1	<b>ACCESSORIES</b>			
# 35	975-138-0	Spacer (22×13.7×2)	1	# 68	612-471-0	Second Planet Gear	3	# 110	940-114-0	Air Hose Nipple (NPT1/4×3/8)	1
# 35-1	975-757-0	Adjusting Spacer (18×13×1)	1	# 69	612-414-1	Front Cover	1	# 111	923-070-0	Chuck (8MM)	1
# 36	982-140-0	Ball Bearing (6000Z)	1	# 70	609-411-1	Chuck Retainer	1	# 112	927-050-0	Chuck Handle (5MM)	1
# 36-1	982-403-0	Ball Bearing (EE-4)	1	# 71	972-115-0	Needle Roller (4×16)	3	# 113	923-071-0	Chuck (13MM)	1
# 36-2	993-039-0	Felt Ring(25×17×3)	1	# 72	972-117-0	Needle Roller (4×17)	2	# 114	927-053-0	Chuck Handle (10MM)	1
<b>#612-005-4 GEAR BOX ASSEMBLY FOR UD-60-20</b>				# 73	974-010-0	Key (3×10)	1	# 115	937-065-0	Spanner (4.8×22×153)	1
# 37	612-035-3	Casing Connector	1	# 74	978-202-0	Snap Ring (20×1)	1	# 116	613-720-0	Dead Handle	1
# 38	612-029-4	Gear Casing	1	# 75	982-103-0	Ball Bearing (6003)	1	# 117	612-730-0	Dead Handle Connector	1
				# 76	982-143-0	Ball Bearing (6003Z)	1				
				# 77	982-403-0	Ball Bearing (EE-4)	1				

When ordering spare parts, please Specify tool type, code number and part name.

Printed in Japan



**URYU SEISAKU, LTD.** Osaka Japan

For further information, please contact at any time your nearest URYU distributor.

OKA-431-04-06-04-2005