

UD-50S-22A & 45A, ANGLE DRILLS



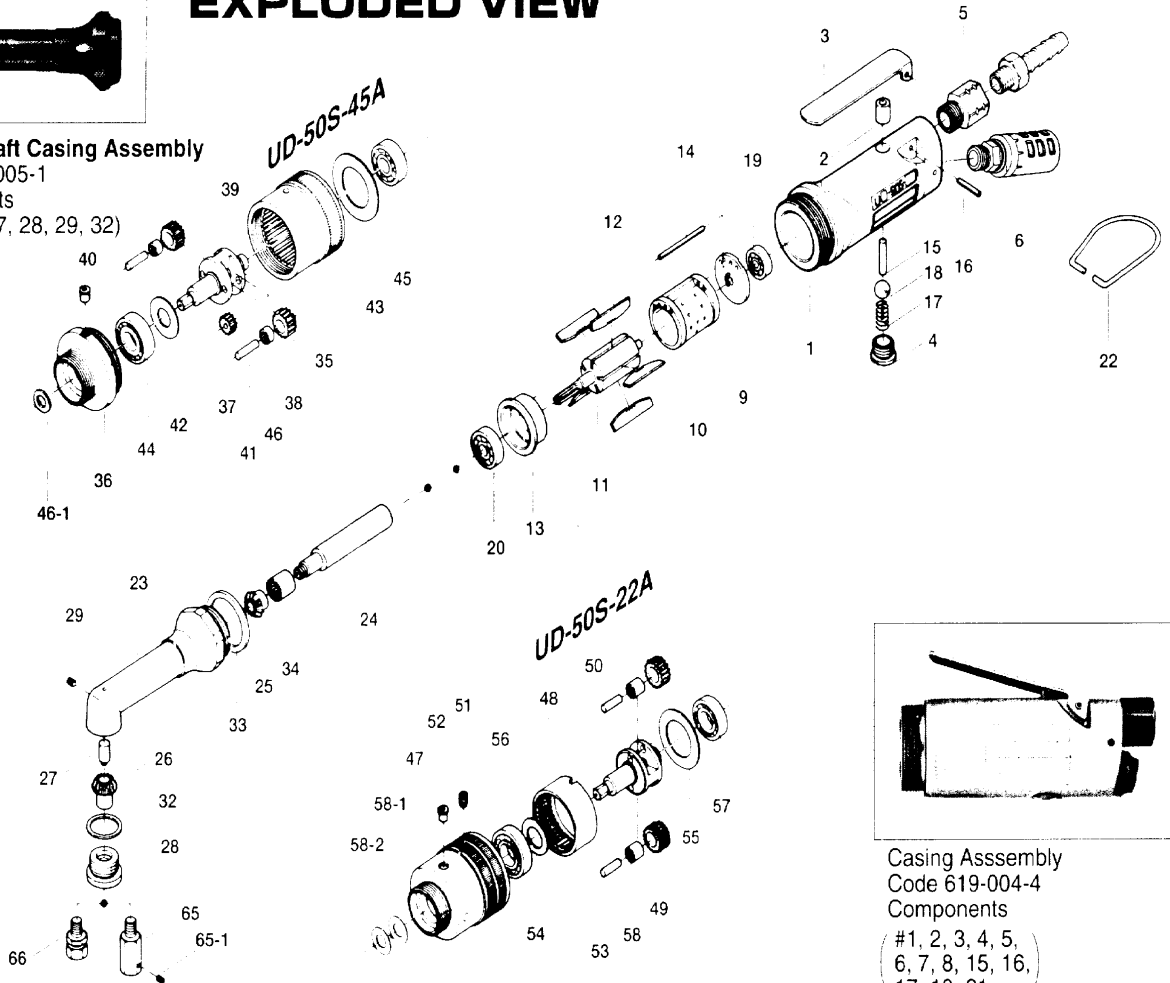
EXPLODED VIEW

Middle Shaft Casing Assembly

Code 602-005-1

Components

(#23, 26, 27, 28, 29, 32)



Casing Assembly

Code 619-004-4

Components

(#1, 2, 3, 4, 5,
6, 7, 8, 15, 16,
17, 18, 21)

PARTS LIST

Casing Assembly components are marked with " ".
Middle Shaft Casing Assembly components are marked with "x".

Index No.	Code No.	Parts Name	Quantity	Index No.	Code No.	Parts Name	Quantity	Index No.	Code No.	Parts Name	Quantity
= 1	619-025-4	Casing	1	= 29	953-104-0	Allen Head Flat Point Screw(M4X4)	1	= 50	479-480-0	Gear Cage	1
= 2	553-103-1	Valve Rod Bushing	1	= 32	975-760-0	Adjusting Spacer(20X17Xt)	1	= 51	953-205-0	Allen Head Dog Point Screw(M5X5)	1
= 3	500-107-1	Valve Lever	1	= 33	975-795-0	Adjusting Spacer(29X26Xt)	1	= 52	968-130-0	Grease Cup(3/16)	1
= 4	201-108-1	Valve Plug	1	= 34	988-201-0	Needle Roller Bearing (M812)	1	= 53	972-114-0	Needle Roller(4X13.8)	2
= 5	191-091-5	Air Inlet Bushing	1					= 54	975-162-0	Spacer(24X12.5X0.4)	1
= 6	235-885-1	Silencer Assy	1	479-005-4 UD-50S-45A GEAR BOX ASSEMBLY				= 55	975-244-0	Spacer(31.5X26X2)	1
= 9	603-285-1	Rear Plate	1	= 35	611-029-5	Gear Casing	1	= 56	982-100-0	Ball Bearing(6000)	1
= 10	603-286-1	Cylinder	1	= 36	497-037-4	Gear Casing Connector	1	= 57	982-402-0	Ball Bearing(EE-3)	1
= 11	603-287-1	Rotor	1	= 37	674-460-1	Rotor Gear	1	= 58	988-450-0	Needle Roller Bearing (HK-0408)	2
= 12	603-288-1	Blade	5	= 38	674-470-1	Planet Gear	2	= 58-1	479-483-3	Gear Cage Spacer	1
= 13	603-289-1	Front Plate	1	= 39	479-480-4	Gear Cage	1	= 58-2	975-749-0	Adjusting Spacer(13X6Xt)	1
= 14	970-030-0	Pin(1.8X44)	1	= 40	968-130-0	Grease Cup(3/16)	1	Accessories			
= 15	970-321-0	Pin(4X21)	1	= 41	972-114-0	Needle Roller(4X13.8)	2	= 59	940-114-0	Air Hose Nipple (N.P.T.1/4X3/8)	1
= 16	973-124-0	Roll Pin(3X24)	1	= 42	975-162-0	Spacer(24X12.5X0.4)	1	= 60	936-100-0	Spanner(8X2X90)	1
= 17	977-154-0	Cone Spring (7X7.5X17)	1	= 43	975-276-0	Spacer(36X22X2)	1	= 61	936-512-0	Spanner(12)	1
= 18	981-030-0	Ball(3/8)	1	= 44	982-100-0	Ball Bearing(6000)	1	= 62	937-006-0	Spanner(4X21X150)	1
= 19	982-021-0	Ball Bearing(626)	1	= 45	982-402-0	Ball Bearing(EE-3)	1	= 63	939-108-0	Allen Wrench(1.5)	1
= 20	982-026-0	Ball Bearing(634)	1	= 46	988-450-0	Needle Roller Bearing (HK-0408)	2	Optional Accessories			
= 21	990-912-0	O-Ring(SNS-14)	1	= 46-1	602-183-1	Gear Cage Spacer	1	= 64	932-110-0	Air Regulator(U1/4)	1
= 22	010-790-1	Suspension Ring	1	479-005-0 UD-50S-22A GEAR BOX ASSEMBLY				= 65	924-011-0	Drilling Adapter(4MM)	1
= 23	602-034-1	Middle Shaft Casing	1	= 47	479-029-0	Gear Casing	1	= 65-1	953-053-0	Allen Head Flat Point Screw(M3X3)	1
= 24	602-500-1	Middle Shaft	1	= 48	611-465-1	Internal Gear	1	= 66	923-100-0	Cone Jaw Chuck Assembly	1
= 25	602-420-1	Driving Gear	1	= 49	603-470-1	Planet Gear	2				
= 26	602-430-1	Driving Gear	1								
= 27	692-431-1	Driving Gear Spindle	1								
= 28	602-075-1	Casing Front Plate	1								

When ordering spare parts, please specify tool type, code number and parts name.

Printed in Japan

URYU SEISAKU, LTD. Osaka, Japan