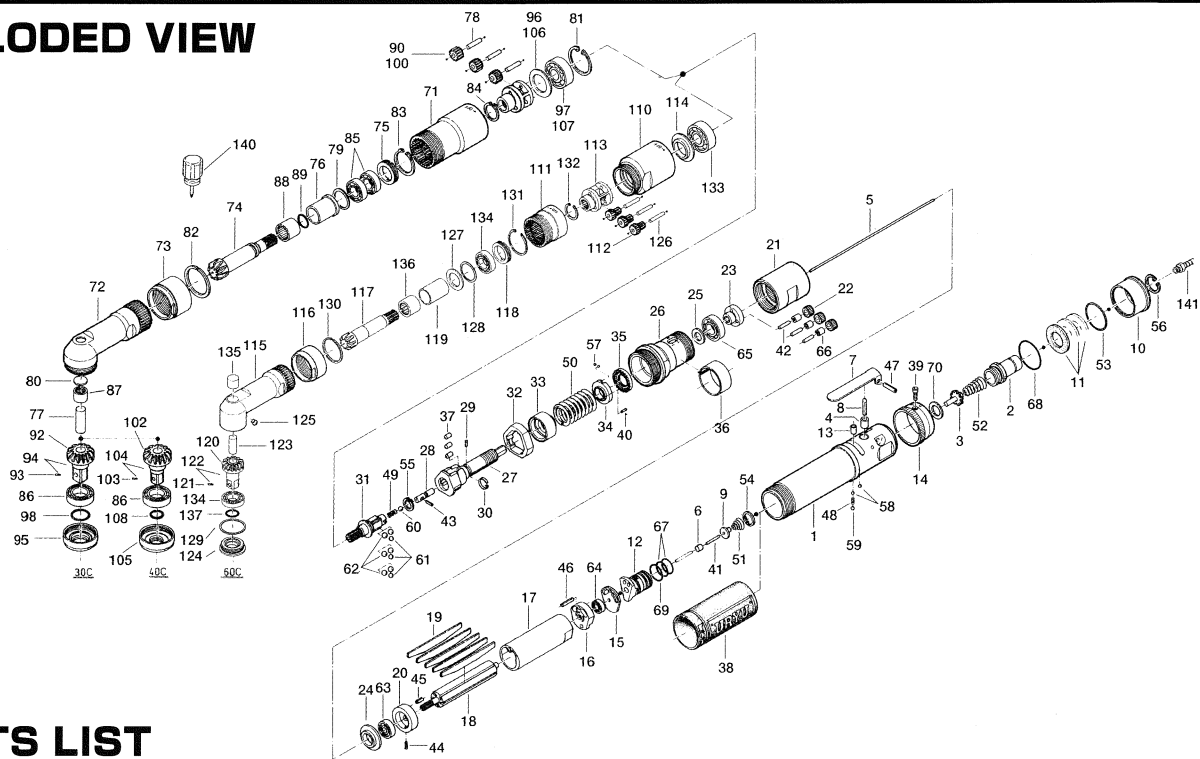


UAN-701R-30C, 40C&60C Torque Control Angle Nutrunners

EXPLODED VIEW



PARTS LIST

Index No.	Code No.	Parts Name	Quantity	Index No.	Code No.	Parts Name	Quantity	Index No.	Code No.	Parts Name	Quantity
# 1	269-025-5	Casing	1	#52	977-275-0	Cone Spring (11×14×32)	1	#97	982-201-0	Ball Bearing (6201)	1
# 2	259-091-6	Air Inlet Bushing	1	#53	978-337-0	Snap Ring (34×1.4×13)	1	#98	990-156-0	O-Ring (P16NTN)	1
# 3	259-100-6	Valve	1	#54	979-008-0	Inner Snap Ring (15)	1	Parts for UAN-701R-40C			
# 4	553-103-1	Valve Rod Bushing	1	#55	979-351-0	Inner Snap Ring (ISTW-10)	1	# 31	269-346-6	Cam	1
# 5	269-104-5	Valve Rod	1	#56	979-358-0	Inner Snap Ring (ISTW-17)	1	#100	612-470-2	First Planet Gear	3
# 6	444-106-8	Valve Rod Cap	1	#57	981-001-0	Ball (3/32)	2	#101	259-485-6	Second Gear Cage	1
# 7	196-107-7	Valve Lever	1	#58	981-002-0	Ball (1/8)	2	#102	269-430-6	Driven Gear (O)	1
# 8	259-114-0	Valve Spindle	1	#59	981-003-0	Ball (5/32)	1	#103	891-300-1	Socket Retainer Pin Assy	1
# 9	259-254-6	Shut-Off Valve	1	#60	981-004-0	Ball (3/16)	1	#104	895-043-1	Driven Gear Assy (P)	1
#10	259-780-6	Exhaust Stack	1	#61	981-005-0	Ball (7/32)	3	#105	259-488-6	Angle Casing Setter	1
#11	259-835-6	Filter	3	#62	981-006-0	Ball (1/4)	6	#106	975-245-0	Spacer (32×24×2.5H)	1
#12	269-210-5	Reverse Valve	1	#63	982-021-0	Ball Bearing (626)	1	#107	982-102-0	Ball Bearing (6002)	1
#13	268-211-6	Reverse Valve Bushing	1	#64	982-033-0	Ball Bearing (696)	1	#108	990-910-0	O-Ring (SNS-12.5)	1
#14	268-212-6	Reverse Lever	1	#65	982-101-0	Ball Bearing (6001)	1	Parts for UAN-701R-60C			
#15	268-291-7	Rear Plate Spacer	1	#66	988-590-0	Needle Roller Bearing (KT367N)	3	# 31	269-346-7	Cam	1
#16	259-285-6	Rear Plate	1	#67	990-590-0	O-Ring (17×1)	2	#110	269-381-7	Cam Casing	1
#17	269-286-5	Cylinder	1	#68	990-603-0	O-Ring (28.5×1.3)	1	#111	259-466-0	Second Internal Gear	1
#18	269-287-5	Rotor	1	#69	990-914-0	O-Ring (SNS-16)	1	#112	268-471-9	Second Planet Gear	3
#19	269-288-5	Blade (PC)	5	#70	996-433-0	Urethane Packing (19×12×1)	1	#113	268-485-9	Second Gear Cage	1
#20	269-289-5	Front Plate	1	Parts for UAN-701R-30C & 40C				#114	269-487-7	Second Gear Cage Spacer	1
#21	269-465-5	First Internal Gear	3	#71	269-466-5	Second Internal Gear	1	#115	268-441-6	Angle Casing	1
#22	259-470-6	First Planet Gear	1	#72	269-441-5	Angle Casing	1	#116	259-081-0	Locking Nut	1
#23	259-480-6	First Gear Cage	1	#73	259-081-6	Locking Nut	1	#117	268-420-6	Driving Gear	1
#24	259-807-6	Spacer	1	#74	269-420-5	Driving Gear	1	#118	259-426-0	Driving Gear Spindle Retainer Screw	1
#25	408-483-0	Gear Cage Spacer	1	#75	259-426-0	Driving Gear Spindle Retainer Screw	1	#119	259-567-2	Bushing	1
#26	269-369-5	Clutch Casing	1	#76	259-427-6	Driving Gear Spindle Retainer Spacer	1	#120	268-430-6	Driven Gear (O)	1
#27	269-654-5	Cam Guide	1	#77	972-360-1	Roller Pin (10×28)	1	#121	891-300-1	Socket Retainer Pin Assy	1
#28	268-318-6	Pilot Pin	1	#78	972-120-0	Roller Pin (4×19)	3	#122	895-044-1	Driven Gear Assy (P)	1
#29	471-764-7	Notch Pin	1	#79	975-806-0	Adjusting Spacer (24×20×t)	1	#123	972-320-0	Roller Pin (8×20)	1
#30	471-670-7	Band	1	#80	975-596-0	Round Plate (14×1)	1	#124	268-488-6	Angle Casing Setter	1
#31	269-375-5	Cam Ring	1	#81	979-025-0	Inner Snap Ring (32)	1	#125	968-130-0	Grease Cup (3/16)	1
#32	269-164-5	Spring Setter	1	#82	979-194-0	Outer Snap Ring (32)	1	#126	972-107-0	Roller Pin (3.5×21.8F)	3
#33	269-562-5	Stopper	1	#83	979-207-0	Snap Ring (30)	1	#127	975-166-0	Spacer (24×16×1.5)	1
#34	259-257-6	Regulator Screw	1	#84	979-358-0	Inner Snap Ring (ISTW-17)	1	#128	975-806-0	Adjusting Spacer (24×20×t)	1
#35	259-670-0	Band	1	#85	982-902-0	Ball Bearing (6901)	2	#129	975-807-0	Adjusting Spacer (28×25×t)	1
#36	269-651-5	Cam Roller	3	#86	982-904-0	Ball Bearing (6903)	1	#130	978-308-0	Snap Ring (30×1.6)	1
#37	269-840-5	Casing Protector	1	#87	988-388-0	Needle Roller Bearing (F1010)	1	#131	979-206-0	Snap Ring (28)	1
#38	945-001-0	Allen Head Bolt (M3×10)	1	#88	988-389-0	Needle Roller Bearing (F1616)	1	#132	979-358-0	Inner Snap Ring (ISTW-17)	1
#39	970-091-0	Pin (H) (2×4.5)	1	#89	990-910-0	O-Ring (SNS-12.5)	1	#133	982-102-0	Ball Bearing (6002)	1
#40	970-091-0	Pin (H) (2×21.5)	1	Parts for UAN-701R-30C				#134	982-902-0	Ball Bearing (6901)	2
#41	970-104-0	Roller Pin (3×14)	3	#31	269-346-5	Cam	1	#135	988-480-0	Needle Roller Bearing (BK-810)	1
#42	972-094-0	Roller Pin (2×8)	1	#90	269-471-5	Second Planet Gear	3	#136	988-393-0	Needle Roller Bearing (NF-1416)	1
#43	969-470-0	Pin (E) (2×8)	1	#91	269-485-5	Second Gear Cage	1	#137	990-910-0	O-Ring (SNS-12.5)	1
#44	973-007-0	Roll Pin (2×7)	1	#92	269-430-5	Driven Gear (O)	1	ACCESSORIES			
#45	973-108-0	Roll Pin (3×8)	1	#93	891-304-1	Socket Retainer Pin Assy	1	#140	939-402-0	Manual Driver (No.2)	1
#46	973-116-0	Roll Pin (3×16)	1	#94	895-042-1	Driven Gear Assy (P)	1	#141	940-114-0	Air Hose Nipple (NPT 1/4×3/8)	1
#47	973-124-0	Roll Pin (3×24)	1	#95	269-488-5	Angle Casing Setter	1				
#48	976-022-0	Spring (3×5.5×0.4)	1	#96	975-249-0	Spacer (32×21×1.5H)	1				
#49	976-058-0	Spring (4.5×11×0.4)	1								
#50	976-579-0	Spring (26×43.5×4.0)	1								
#51	977-072-0	Cone Spring (5.5×15×14)	1								

When ordering spare parts, please specify tool type, code number and part name.

Printed Japan



URYU SEISAKU, LTD. Osaka Japan

For further information, please contact at any time your nearest URYU distributor.

OKA-456-05-08-05-2003